

# The SEAA ENews Newsletter

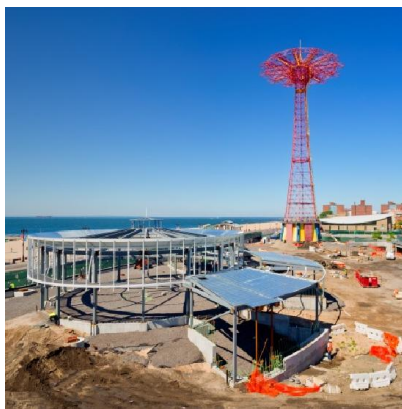


401 E. 4th St., Suite 204  
Winston-Salem, NC 27101

336-294-8880

[www.sea.net](http://www.sea.net)

## Your Project Could Be a Winner!



SEAA is looking for a few good projects to recognize as part of our 2013 Project of the Year Competition, and your company's project might be one of them. **But don't wait—the nomination deadline is January 31, 2014**

For more than 10 years, SEAA has recognized complex and unique steel erection projects throughout the world. Past winning projects demonstrated successful completion while overcoming unusual conditions, tight time constraints, or other challenges. Many of the winning jobs are public works projects such as bridges, highways, and overpasses. Others are new construction of museums, hospitals, sports arenas, airports, and more.

These photos show construction of the Coney Island Steeple Chase Plaza in New Jersey, Gabriel Steel Erectors of Montgomery, NY, received the Project of the Year Award (Class II -- \$500,000 to \$1 million) for work completed in 2012.

So that member companies of all sizes can participate, projects are recognized in three categories:

- Over \$1 million
- \$500,000 to \$1 million
- Up to \$500,000

For information on entering a project, visit the SEAA website at:

[www.sea.net/membership/project\\_of\\_the\\_year.aspx](http://www.sea.net/membership/project_of_the_year.aspx).

